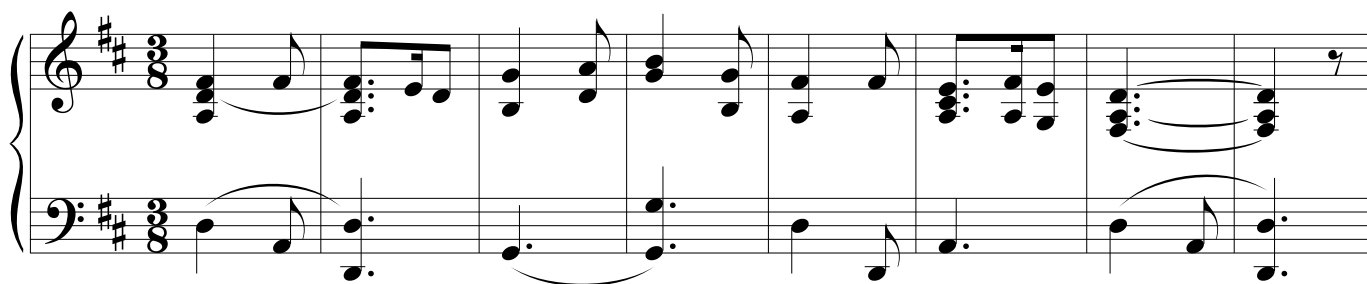


# Nace el Niño en un Portal

Carmelo Erdozaín

Organ



Organ introduction in D major, 3/4 time. The right hand plays a melody of eighth and quarter notes, while the left hand provides a bass line with dotted half notes and quarter notes.

9 D G D A



1. Na - ce\_el Ni - ño en un por - tal, El nos tra - e la paz, \_\_\_\_\_

Org.

Organ accompaniment for the first vocal line. The right hand plays chords and moving lines, while the left hand plays a steady bass line.

17 D G D A A7 D



El nos tra - e la Na - vi - dad, nos tra - e la fe - li-ci - dad \_\_\_\_\_ Ve -

Org.

Organ accompaniment for the second vocal line. The right hand continues with chords and moving lines, while the left hand maintains the bass line.

25 G D G D

25

Org.

25

nid que es hoy No-che bue - na ve - nid que es hoy Na-vi - dad \_\_\_\_\_ los pas -

33 A F# Bm D<sup>6sus4</sup> D A<sup>6sus4</sup> A7 D Fine

33

Org.

33

to-res ya van ca-mi - nan-do al por - tal. Glo-ria a Dios y en la tie - rra paz. \_\_\_\_\_ 2. Los  
3. Ma -

41 G D G D

41

Org.

41

án - ge-les vie - nen can - tan - do, la es - tre - lla em - pie - za a bri - llar \_\_\_\_\_ y en la  
rí - a cui - da a su ni - ño, Jo - sé pre - pa - ra el por - tal \_\_\_\_\_ los pas -

# Nace el Niño en un Portal

3

A

F#

Bm

D<sup>6sus</sup>4

49

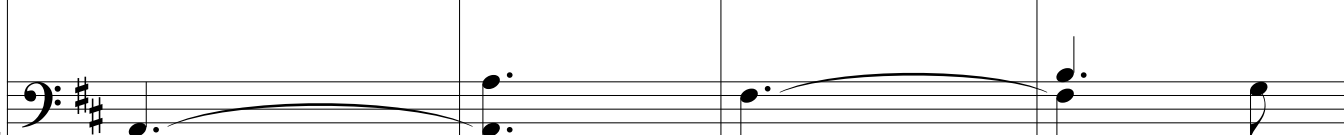


to - rre las cam - pa - nas no ce - san - de to - car - Glo - ria\_a  
to - res de rro - di - llas a - do - ran al za - gal. Glo - ria\_a

49



Org.



D

A<sup>6sus</sup>4

A7

D

D.S.

53



Dios y\_en la tie - rra paz. Ve  
Dios y\_en la tie - rra paz. Ve

53



Org.

